

PROTECTING THE HORSE RACING INDUSTRY

Newmarket is a centre of the British Horse Racing Industry (HRI) which plays a pivotal economic and cultural role to the town. This is reflected in the presence of over 3,000 race horses, 89 licensed trainers, 62 stud farms, 1,133 hectares of training grounds and hundreds of stable staff within and around the town. It also has the largest racehorse training centre in Britain and a key global centre for horse health.

Given its renowned national and international status, it is a core objective of the Development Brief to safeguard existing horse movements within the local area and wider town - which are key to the HRI - by reducing the impact of additional vehicular traffic. This will be achieved by ensuring that the site is well connected to existing footpaths; for instance, the site access will incorporate pedestrian connections to link with existing facilities on Fordham Road whilst an improved connection will be made via the south western boundary of the site to link with the Yellow Brick Road corridor to its west. These new or improved connections will encourage journeys by sustainable modes of transportation for a wide range of services/facilities within Newmarket which are within a short walking or cycling distance. Please refer to page 50 for further information about these measures.

Moreover, a Transport Assessment that will accompany any future development proposal will be required to assess the impact of the development proposal upon the surrounding area - with specific attention to be given to the impact upon the horse racing industry and existing movements. If any adverse impacts are identified, appropriate measures will be incorporated to mitigate the development impact.

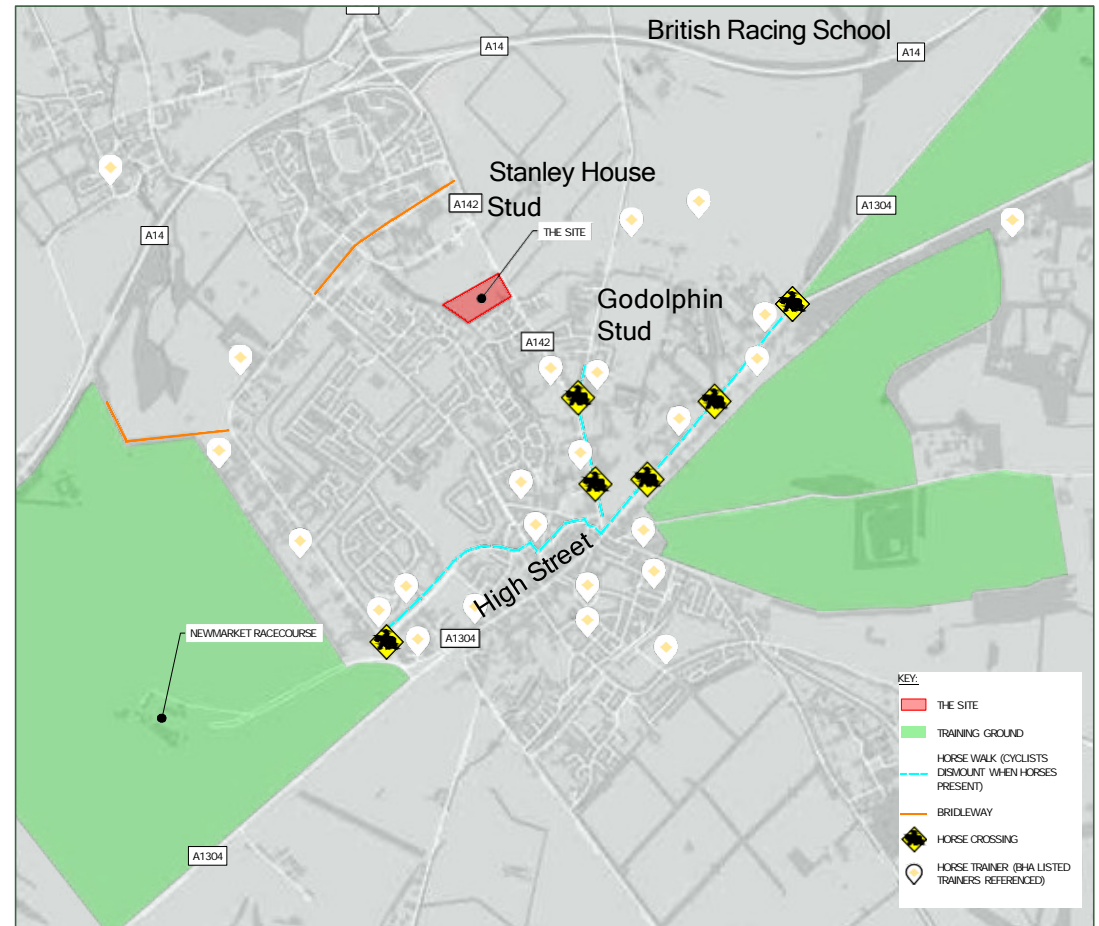


Fig. 7 Map showing Routes around Newmarket

